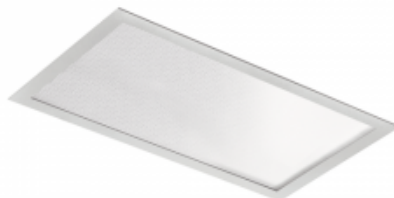


# Fuzo LED 31W 4000K 420 mm x 420 mm Square

Kod produktu: 62552



## Dane techniczne:

- Light source power **1x31W**
- Louver/shutter **MPRM**
- Info **square**
- Luminaire luminous efficacy **89 lm/W**
- Luminaire luminous flux **2750 lm**
- Color temperature **4000K**
- Weight **3.00 kg**
- Energy class **A+**
- Type of installation **Recessed**
- Housing material **Steel sheet**
- Diffuser color **None**
- Light source **LED**
- Number of light sources **1**
- Type of equipment **AC**
- Voltage rating **230 V**
- Light source included **Yes**
- Type of LED **LG6030**
- SELV **Yes**
- Color **Grey**
- Light color **White**
- Color rendering index **80**
- Class of luminaire **I**
- Light distribution **DI**
- Degree of protection (IP) **IP44**
- Class of protection **I**
- CE **Yes**
- Light source protection **Yes**
- For ceiling installation, fire class "F" (L) **Yes**

LED luminaire for universal use. Made with use of energy-saving LEDs of high luminous efficiency from reputable manufacturers. FUZO have been provided with power supply with power factor  $\cos \phi > 0,95$ . Available with housing of different colors, suitable for any interior color. Application: offices, conference rooms, corridors

**Materials:** frame made of electrostatically painted sheet aluminium (standard – grey). Frame can be painted in any RAL color. White housing made of sheet steel. MPRM prismatic diffusor.

**Installation:** suspended ceiling with visible supporting structure or plaster cardboard ceiling

**Power:** 230 V

|               | <b>L</b> | <b>W</b> | <b>H</b> | <b>C</b> | <b>D</b> |
|---------------|----------|----------|----------|----------|----------|
| PX2065315 11W | 240      | 240      | 82       | 230      | 230      |
| PX2065415 11W | 240      | 240      | 82       | 230      | 230      |
| PX2065322 22W | 240      | 240      | 82       | 230      | 230      |
| PX2065422 22W | 240      | 240      | 82       | 230      | 230      |
| PX2065330 21W | 420      | 240      | 82       | 410      | 230      |
| PX2065430 21W | 420      | 240      | 82       | 410      | 230      |
| PX2065340 31W | 420      | 420      | 82       | 410      | 410      |
| PX2065440 31W | 420      | 420      | 82       | 410      | 410      |
| PX2065444 44W | 595      | 595      | 52       | 585      | 585      |
| PX2065448 44W | 595      | 595      | 52       | 585      | 585      |
| PX2065451 20W | 618      | 91       | 82       | 600      | 73       |
| PX2065458 20W | 618      | 91       | 82       | 600      | 73       |
| PX2065465 28W | 918      | 91       | 82       | 900      | 73       |
| PX2065472 28W | 918      | 91       | 82       | 900      | 73       |
| PX2065479 38W | 1218     | 91       | 82       | 1200     | 73       |
| PX2065486 38W | 1218     | 91       | 82       | 1200     | 73       |
| PX2065101 11W | 240      | 240      | 82       | 230      | 230      |
| PX2065108 11W | 240      | 240      | 82       | 230      | 230      |
| PX2065115 22W | 240      | 240      | 82       | 230      | 230      |
| PX2065122 22W | 240      | 240      | 82       | 230      | 230      |
| PX2065129 21W | 420      | 240      | 82       | 410      | 230      |
| PX2065136 21W | 420      | 240      | 82       | 410      | 230      |
| PX2065143 31W | 420      | 420      | 82       | 410      | 410      |
| PX2065150 31W | 420      | 420      | 82       | 410      | 410      |
| PX2065157 44W | 595      | 595      | 52       | 585      | 585      |
| PX2065164 44W | 595      | 595      | 52       | 585      | 585      |
| PX2065171 20W | 618      | 91       | 82       | 600      | 73       |
| PX2065178 20W | 618      | 91       | 82       | 600      | 73       |
| PX2065185 28W | 918      | 91       | 82       | 900      | 73       |
| PX2065192 28W | 918      | 91       | 82       | 900      | 73       |
| PX2065199 38W | 1218     | 91       | 82       | 1200     | 73       |
| PX2065206 38W | 1218     | 91       | 82       | 1200     | 73       |

L - Length

W - Width

H - Height / Depth

C - Installation length

D - Installation width

